

# Metta Star

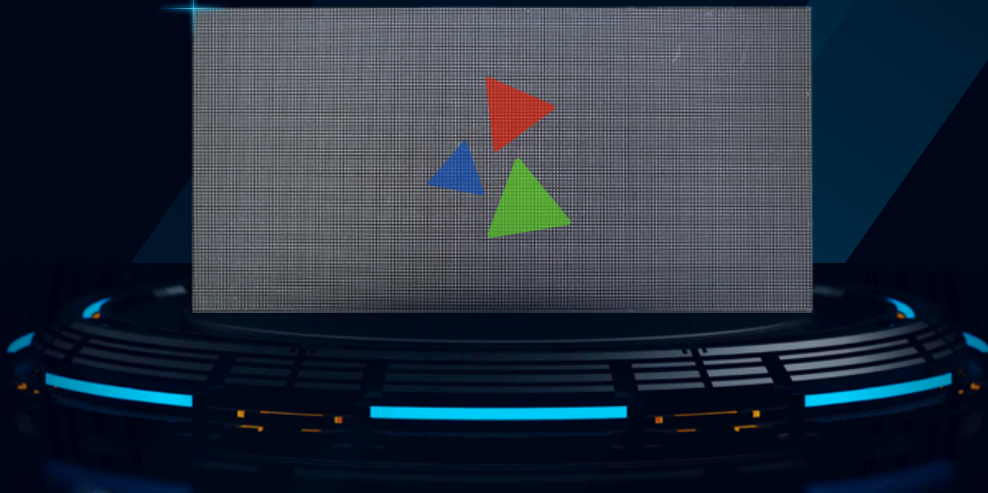
Endless Possibilities



## P 5

OUTDOOR LED MODULE

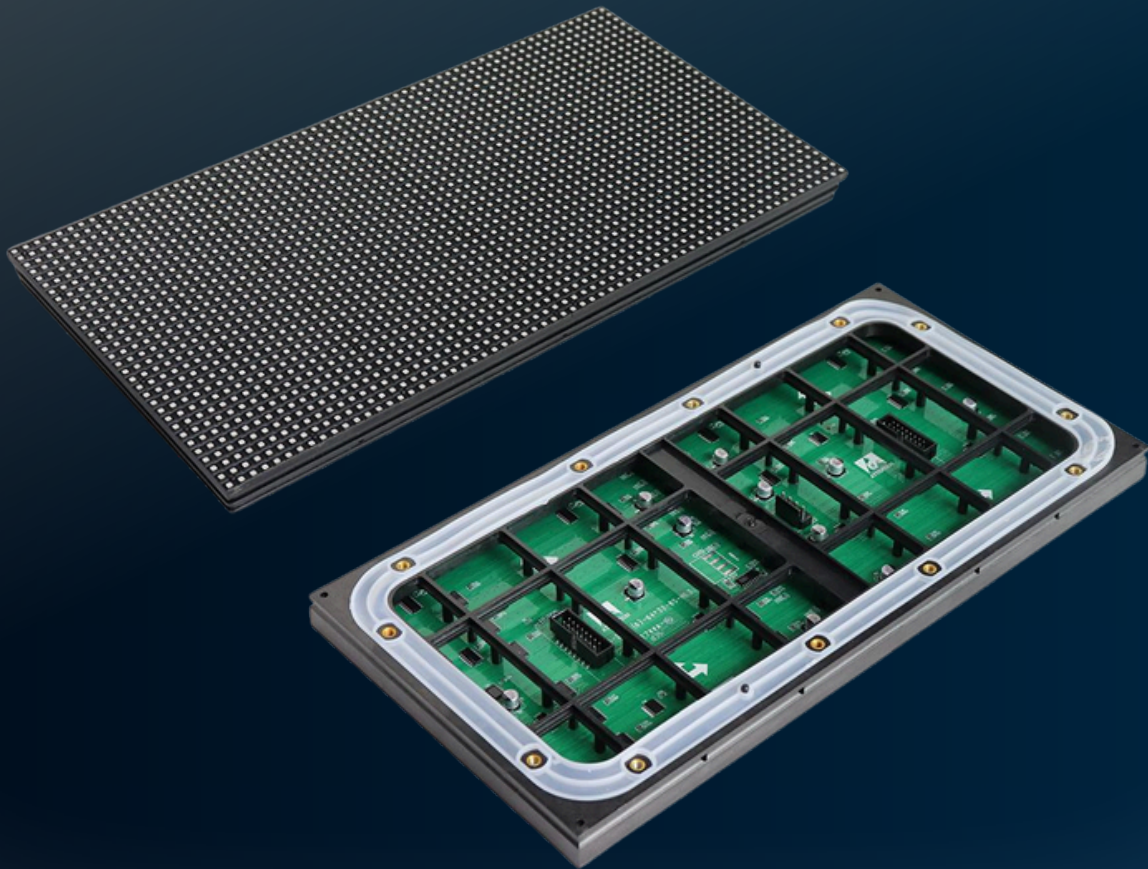
## SPECIFICATION



## LED Lamp Specification

Color	Package	Intensity	Viewing Angle	Wavelength	Testing Conditions
Red	SMD1921	450mcd	140°/130°	622nm	25°C,15mA
Green		680mcd		530nm	25°C,8mA
Blue		100mcd		472nm	25°C,5mA

## Module Image



## Module Parameter

NO.	ITEMS	PARAMETER
1	Module No.	P5
2	Pixel pitch	5mm
3	Module dimension	320*160
4	Lamp	Nationstar (Copper Bracket)
5	Pixel density	40000 Dots/m <sup>2</sup>
6	Module resolution	64*32=2048 Lamps
7	LED encapsulation	SMD1921
8	Pixel configuration	1R1G1B
9	Weight	0.45kg
10	Driving method	1/8 Scan
11	Brightness	≥4200 nits
12	Contrast Ratio	5000:1
13	Frame frequency	≥60 frame/sec
14	Refresh Rate	≥11940 Hz
15	Gray level	13bits (RGB each)
16	Display Colors	4398 Billion
17	Power consumption	≤43W
18	Input Voltage (DC)	4.5±0.1V
19	Viewing angle(H/V)	140°/130°
20	Best viewing distance	≥9m
21	Working environment	Temperature: -20°C~40°C   Humidity: 10%~90%RH
22	Control system	Synchronous Control system
23	Life span	100,000 hours



---

### **Metta Star Innovations**

📞 98943 73741

✉️ [contact@mettastar.in](mailto:contact@mettastar.in)

🌐 [www.mettastar.in](http://www.mettastar.in)

**Registered Office:** No:1439, 7th A Main Rd, Hampi Nagar, RPC Layout, Vijayanagar, Bengaluru, Karnataka-560104