

# Metta Star

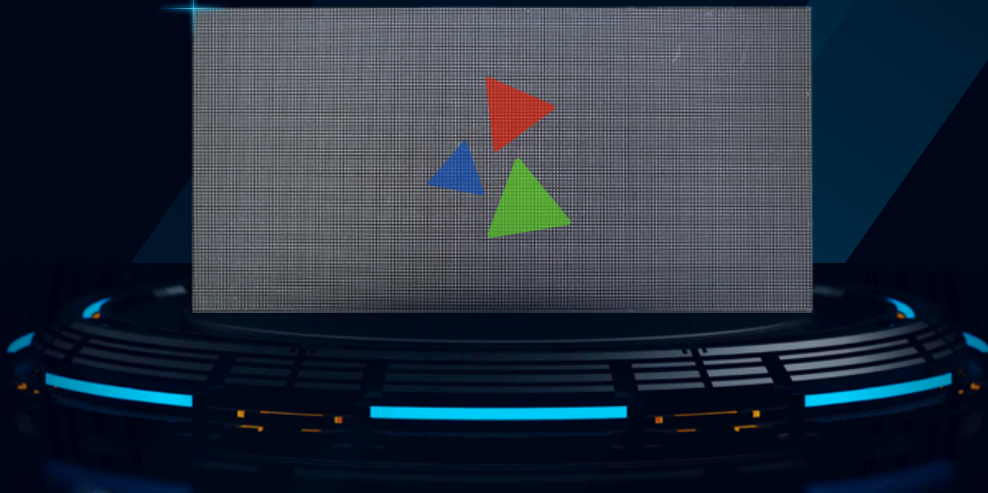
Endless Possibilities



## P6.0

OUTDOOR LED MODULE

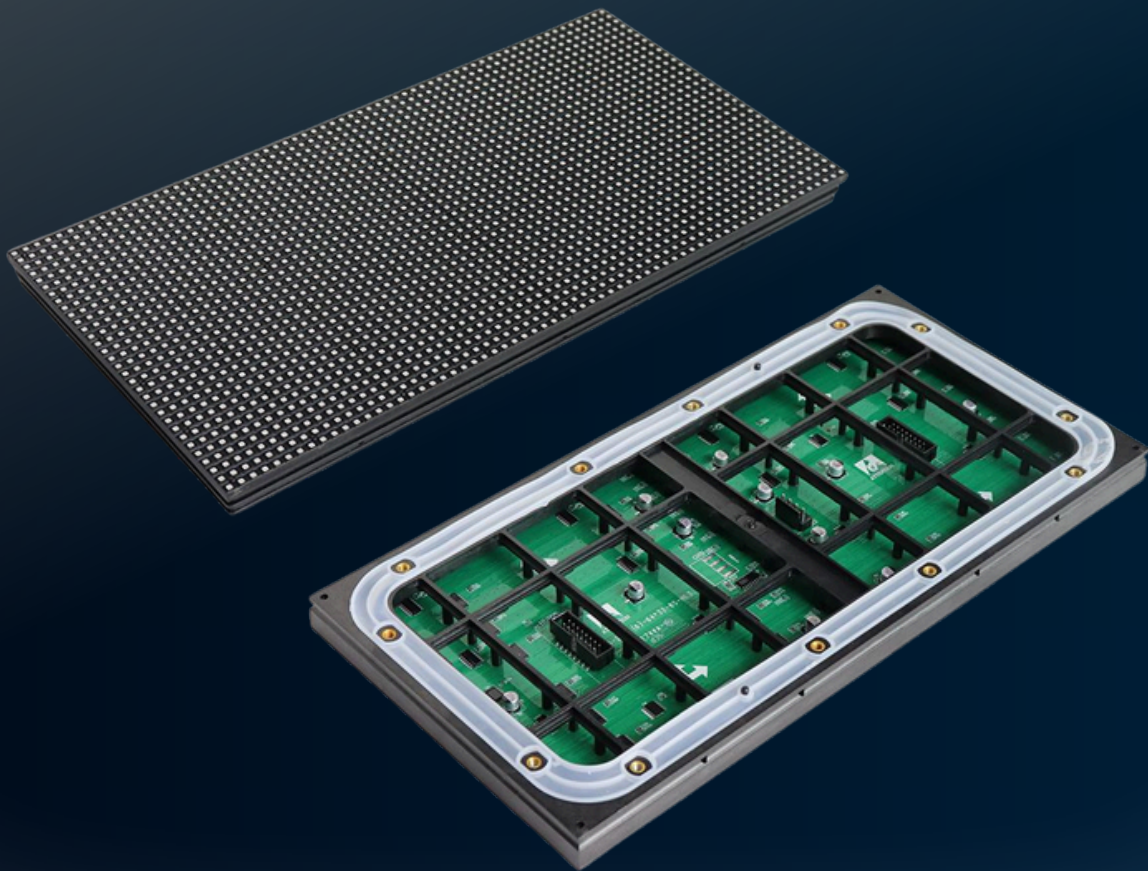
### SPECIFICATION



## LED Lamp Specification

Lamp Brand	Color	Intensity	Wavelength	Testing Conditions
Nationstar	Red	450mcd	622nm	25°C,15mA
	Green	680mcd	530nm	25°C,8mA
	Blue	100mcd	472nm	25°C,5mA

## Module Image



## Module Specification

NO.	ITEMS	PARAMETER
1	Pixel Pitch Category	P6.0
2	Pixel pitch	6.67 mm
3	Pixel configuration	1R1G1B
4	Lamp	Nationstar (Copper Bracket)
5	Module dimension (W × H × D)	320 mm × 160 mm × 18 mm
6	Pixel density	22500 dots/m <sup>2</sup>
7	Module resolution	48 × 24
8	Lamp Board Housing	With housing
9	Maintenance Method	Back maintenance
10	Cabinet Flatness	0.2 mm
11	Protection Level	IP65 (Front)
12	LED encapsulation	SMD2727
13	Brightness	≥5500 nits
14	Color Temperature	2000K to 14000K adjustable
15	Brightness Uniformity	≥ 97%
16	Color Uniformity	≤ ± 0.003Cx, Cy
17	Contrast Ratio	≥ 5000:1
18	Viewing angle(H/V)	140°/120°
19	Driving Method	Constant current driving
20	Frame Frequency	60 Hz
21	Refresh Rate	≥11940 Hz
22	Grey Level	Up to 14 bit
23	Power Supply	110 to 220 VAC ± 15%
24	Max. Consumption	≤ 500 W/m <sup>2</sup> (5500 nits)
25	Average Consumption	≤ 170 W/m <sup>2</sup> (4500 nits)
26	Package Dimensions (W × H × D)	634 (W) mm × 410 (H) mm × 380 (D) mm
27	Net Weight	22.45 KG (40 pcs in 1)
28	Working Temperature	-20 °C to 50 °C (-4 °F to 120 °F)
29	Working Humidity	10% RH to 80% RH
30	Storage Humidity	10% RH to 90% RH
31	Storage Temperature	-20 °C to 60 °C (-4 °F to 140 °F)



---

### **Metta Star Innovations**

📞 98943 73741

✉️ [contact@mettastar.in](mailto:contact@mettastar.in)

🌐 [www.mettastar.in](http://www.mettastar.in)

**Registered Office:** No:1439, 7th A Main Rd, Hampi Nagar, RPC Layout, Vijayanagar, Bengaluru, Karnataka-560104